

P.O.Box 130571
20105 Hamburg/Germany

Tel. +49 40 33441944
Fax +49 40 33441945

www.lohrmann.com
info@lohrmann.com

For Sale:	Pre-owned 2.5 MW Steam Turbine Genset Backpressure-Type
Ref.-No:	STG-27.48

Brief plant history:

The power plant was shut down in December 2006 after 25,000 operating hours. The TG-Set is in excellent condition and has been already dismantled, packed and stored.

Description of major components:

Turbine

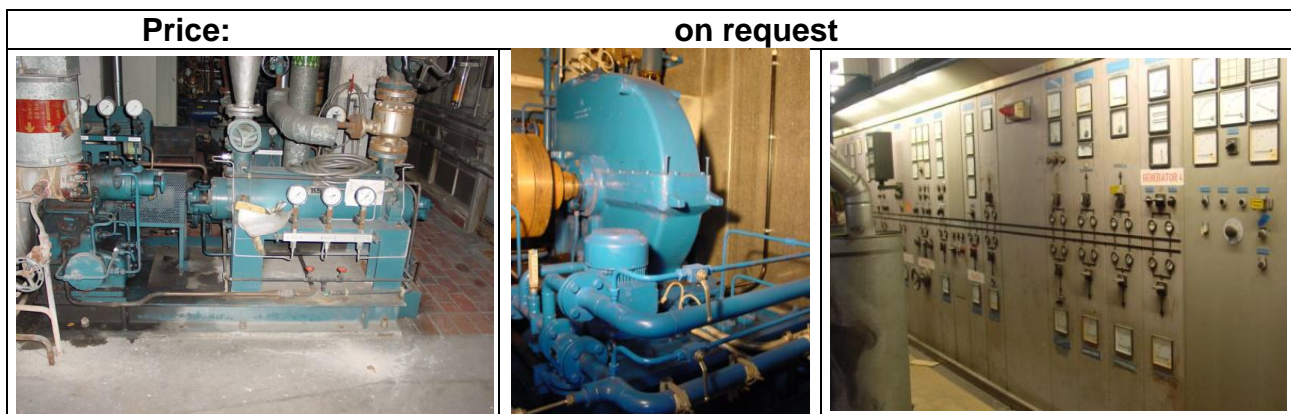
Manufacturer	KKK - CFR 5 G6a
Type	Backpressure
Year of manufacturing	2002
Power output	2.2 MW (+ 5MW by nozzles change)
Steam parameters	65 bar, 480 °C, 20 t/h
Rotation speed	23000 rpm
Pressure of controlled extraction	1.8 bar
Backpressure	1.0 - 17.0 bar

Generator

Manufacturer	Leroy Somer
Rating	ca. 2.5 MVA

Optional equipment

- Reducing station 63 / 2.5 bar



Further information on request

Important Disclaimer

Although the statements and technical information contained herein are believed to be materially accurate as of the date hereof, no representation or warranty is given as to the accuracy of any of the information provided.

This document contains confidential information intended only for the use of the addressee. If you are not the intended recipient of this information then you are hereby notified that any use, dissemination, distribution or reproduction of this message is prohibited.