

P.O.Box 130571
20105 Hamburg/Germany

Tel. +49 40 33441944
Fax +49 40 33441945

www.lohrmann.com
info@lohrmann.com

For Sale:	Pre-owned 53 MW Combined Cycle Power Plant
Ref.-No:	GT-CC-040

Brief plant history:

This approx. 53 MW combined cycle power plant was commissioned in 2011 and shut down in 2012. In 2007 a new gas turbine was installed which reached so far 25340 hours and is due for overhaul. The last turbine performance test was in May 2012 with a positive result. The power plant is in excellent condition and available for immediate sale and relocation.

Description of major plant components:

Gas Turbine (GE)

Manufacturer/Model	GE / LM6000PD (Dry Low NOx)
Power output (ISO)	42.8 MWeI
Gross efficiency	41.4%
Fuel	natural gas
Inlet air chilling system	coil system (adsorption chiller)
Generator data	60 MVA, 11.5 kV, 50 Hz

Steam Turbine

Manufacturer/Type	Nuovo Pignone, condensation turbine with two steam bleeds, whereas one bleed is with regulated steam pressure
Power output	10.2 MW (max. 11.2 MW)
Steam parameters	HP: 40 bar, 420 °C, 40.8 t/h LP: 4 bar, 180 °C, 15.5 t/h
Condenser	ACC (Air Cooled Condenser), 0.14 bar
Generator data	14 MVA, 15 kV, 50 Hz

HRSG

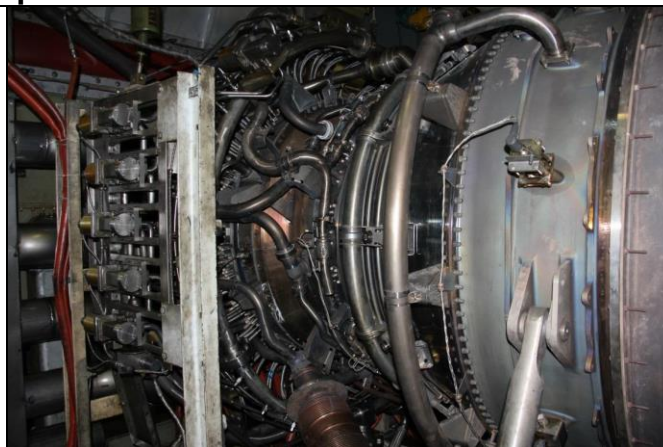
Manufacturer/Type	BBP, horizontal, two-pressure boiler with a natural circulation, with additional burners, without bypass damper
-------------------	---

Step-up transformer

three-coil unit step-up transformer (TR-1) with parameters 115 ± 8x 132/11.5/15kV, 75/60/15MVA with a switch of live jaws on HV side of the step-up transformer

Price:

on request



Further information on request

Important Disclaimer

Although the statements and technical information contained herein are believed to be materially accurate as of the date hereof, no representation or warranty is given as to the accuracy of any of the information provided.

This document contains confidential information intended only for the use of the addressee. If you are not the intended recipient of this information then you are hereby notified that any use, dissemination, distribution or reproduction of this message is prohibited.