

P.O.Box 130571
20105 Hamburg/Germany

Tel. +49 40 33441944
Fax +49 40 33441945

www.lohrmann.com
info@lohrmann.com

For Sale:	Pre-owned 35 MW Combined Cycle Power Plant
Ref.-No:	GT-CC-021B

Brief plant history:

This 35 MW combined cycle power plant converts natural gas into electricity and heat, with combined efficiency of 47.5%. The heat (steam extraction from the steam turbine) is used in an industrial process and district heating. The plant was commissioned in 1995 and mothballed in January 2013 after approx 76,000 running hours and approx. 2400 starts. It is designed for unmanned operation (controlled remotely). This power plant is in excellent condition and available for immediate sale and relocation.

Description of major plant components:

Gas Turbine

Manufacturer	Siemens
Model	SGT 600 (low-NOx)
Power output (ISO)	25 MWeI
Efficiency	34.2 %
Fuel	natural gas
Operating hours at last overhaul	approx. 74,600
Operating hours until next overhaul	approx. 18,700 (at approx. 94,700 hours)

Steam Turbine (European manufacturer)

Power output	10 MWeI
Type	condensing with extraction (25 t/h, 11 bar, 205°C)
Condenser type	air cooled condenser

Generator (European manufacturer)

Generator data	44 MVA, 10.5 kV. 50 Hz
----------------	------------------------

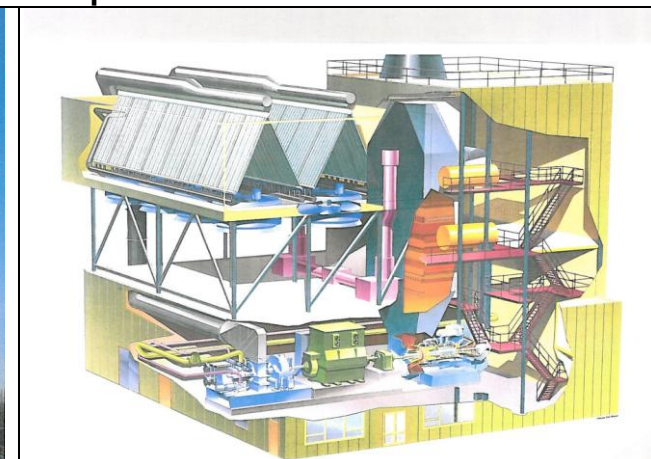
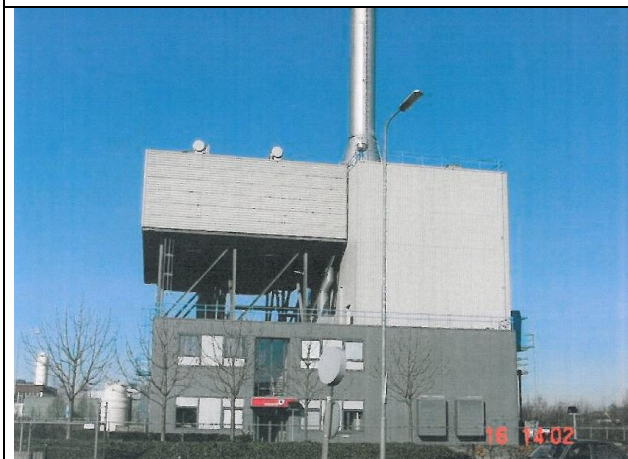
HRSG (European manufacturer)

Type	vertical, double pressure with forced circulation
------	---

Steam parameters:

HP steam:	65 bar, 501 °C, 35 t/h
LP steam:	8 bar, 209 °C, 7 t/h

Price: **on request**



Further information on request

Important Disclaimer

Although the statements and technical information contained herein are believed to be materially accurate as of the date hereof, no representation or warranty is given as to the accuracy of any of the information provided. This document contains confidential information intended only for the use of the addressee. If you are not the intended recipient of this information then you are hereby notified that any use, dissemination, distribution or reproduction of this message is prohibited.