

P.O.Box 130571  
20105 Hamburg/Germany

Tel. +49 40 33441944  
Fax +49 40 33441945

www.lohrmann.com  
info@lohrmann.com

<b>For Sale:</b>	<b>66 MW</b>
	<b>Pre-owned Combined Cycle Power Plant</b>
<b>Ref.-No:</b>	<b>GT-CC-019</b>

**Brief plant history:**

The 63 MW Combined Cycle Cogeneration Power Plant was commissioned in 1994 and decommissioned in January 2013 after reaching approx. 110,000 EOH. Due to professional maintenance, the plant is in excellent condition and is available for immediate sale and relocation.

**Plant characteristic:**

Fuel	natural gas
Nominal Gross Output	66 MW (without supplementary firing) 80 MW (with supplementary firing)
NOx Emissions	110 mg/Nm <sup>3</sup> (15 % O <sub>2</sub> )

**Description of major plant components:**

**Gas Turbine** – European manufacturer (commissioning year: 1994)

Type	V64.3
Power output (ISO)	58.5 MW
Exhaust parameters	515 °C / 1477 kg/h
Last scheduled maintenance	2010 (13.000 EOH since last scheduled maintenance)
Bypass stack	No

**GT generator** – European manufacturer

Generator data	74 MVA, 10.5 kV, 50 Hz
----------------	------------------------

**Steam turbine** – European manufacturer (commissioning year: 1982)

Type	back pressure (steam outlet parameters: 13 bar, 280 °C)
Power output	31 MW
Last scheduled maintenance	2007

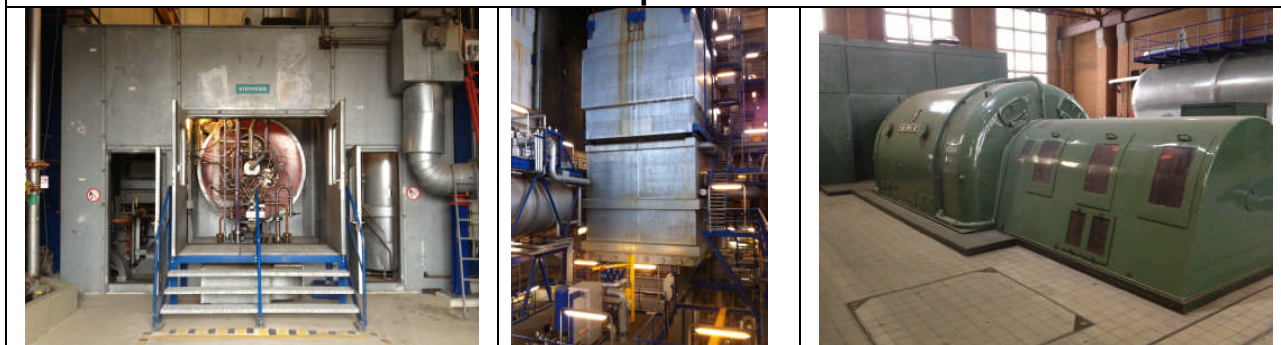
**ST generator** – European manufacturer (commissioning year: 2007)

Generator data	6.3 kV, 33 MVA, 50 Hz
----------------	-----------------------

**Heat Recovery Steam Generator** –European manufacturer (commissioning year: 1994)

Type	horizontal, natural circulation, single pressure, with supplementary firing
Steam parameters	114 bar, 510 °C, 51.8 kg/s (with supplementary firing) 65 bar, 454 °C, 25.2 kg/s (without supplementary firing)

**Price:** **on request**



**Further information on request**

**Important Disclaimer**

Although the statements and technical information contained herein are believed to be materially accurate as of the date hereof, no representation or warranty is given as to the accuracy of any of the information provided. This document contains confidential information intended only for the use of the addressee. If you are not the intended recipient of this information then you are hereby notified that any use, dissemination, distribution or reproduction of this message is prohibited.